



Graduate School of Education Faculty of Education The University of Tokyo Guidebook 2025



Graduate School of Education, Faculty of Education, The University of Tokyo
Public Relations and Information Committee

7-3-1 Hongo, Bunkyo-ku, Tokyo 113-0033 Japan
Phone: 03-5841-3904

Designed and printed by Bunka Co., Ltd.





Education Studies × Educators for new value creation

contents

- 01. Message from the Dean
- 02. About the Graduate School and the Faculty
- 04. 11 Studies
- 06. Alumni Interview
- 07. 5 Undergraduate Courses

- 08. History and Philosophy of Education Course
- 09. Social Sciences in Education Course
- 10. Educational Practices and Policies Course
- 11. Educational Psychology Course
- 12. Physical and Health Education Course

- 13. 10 Graduate Divisions
- 14. Division of History and Philosophy of Education
- 15. Division of Social Sciences in Education
- 16. Division of Lifelong Learning Infrastructure Management
- 17. Division of University Management and Policy Studies
- 18. Division of Educational Psychology

- 19. Division of Clinical Psychology
- 20. Division of Physical and Health Education
- 21. Division of Professional Development of Teachers
- 22. Division of Curriculum Development
- 23. Division of School Improvement and Policy Studies
- 24. University Organizations/Facilities



Education Studies to Create New Value

Dean of the Graduate School of Education,
the Faculty of Education

勝野 正章
Masaaki Katsuno

Message from the Dean

The term “inclusive intellect” represents the philosophy of learning and studies at the University of Tokyo’s Graduate School and Faculty of Education. Modern academic studies have achieved remarkable progress by meticulously analyzing nature, society, and people. Knowledge gained through such analyses brought enormous benefits in the areas of technology, economy, industry, welfare, and healthcare, to name a few. However, it also led to environmental degradation across the globe, arbitrary categorization and hierarchy of people and societies, and exclusion of others who have different values, opinions, and ways of life. It is regrettable that education studies also served as a body of knowledge for division and exclusion at times.

“Inclusive intellect” can be defined as “connecting intellect” that aims to overcome the exclusive nature of knowledge through critical reflection. Today, with societal divides, discrimination, and exclusion growing in severity, contemporary society

needs people equipped with the sensibility to contemplate these issues, coupled with an in-depth understanding of the causes, backgrounds, and mechanisms of the problems. Cultivating this sensibility and understanding as inclusive intellect is the foundation shared across the Graduate School and the Faculty of Education. We aim to provide technical and interdisciplinary studies and education that support students with diverse academic and career interests, thereby creating an inclusive society that values diversity and inclusion. These interests include the history and ideas of education, development of the human body and mind, practice and assistance that support learning and development, and social systems for learning and education.

We truly look forward to welcoming you here at the Graduate School and Faculty of Education, so we will explore new horizons together in education and education studies.

History of the Faculty of Education / Graduate School of Education

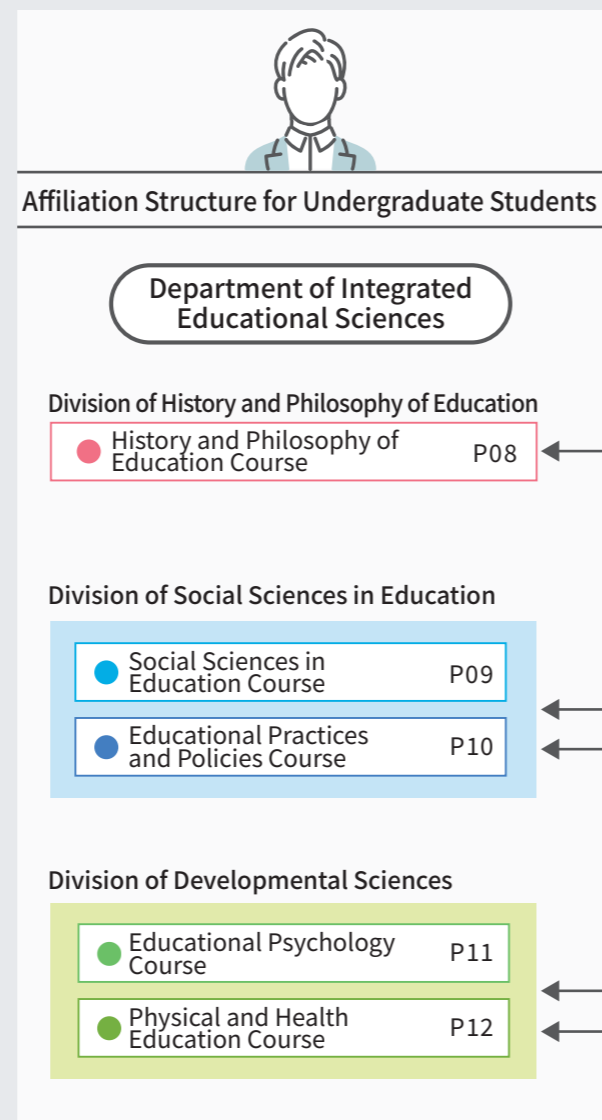
The Faculty of Education at the University of Tokyo was established in May 1949, when the university was reorganized under the new system and five courses offered by the Department of Education of Faculty of Literature under the old system were established as an independent faculty. In 1947, the Basic Act on Education and the School Education Act were enacted and the “6-3-3” school system was introduced. Universities throughout Japan established faculties of education and liberal arts, in line with the policy for postwar education reform, which advocated that the former system of teacher training schools should be revised and that faculties of education be established at national universities. In response to the call for reform, the Faculty was established to perform the following three tasks: (1) pursue specialized research in the field of education while training expert researchers and teachers; (2) train educational administration officials, directors, and instructors of social education, and school administrators with insight and a grounding in education; and (3) assume responsibility for training teachers for the secondary school attached to the new University of Tokyo. The three tasks remain essentially unchanged today, despite the university’s shift in emphasis toward graduate education. The Faculty of Education began its journey as a five department faculty containing the Departments of Education, Educational Psychology, School Education, Educational Administration, and Physical Education. It went through diverse changes thereafter, and today, as shown in the following figure, it consists of one undergraduate department with three majors that offer five courses of study. The graduate school has two departments that offer three majors with ten divisions.

Read the QR code for details ▶



Organization

Faculty of Education

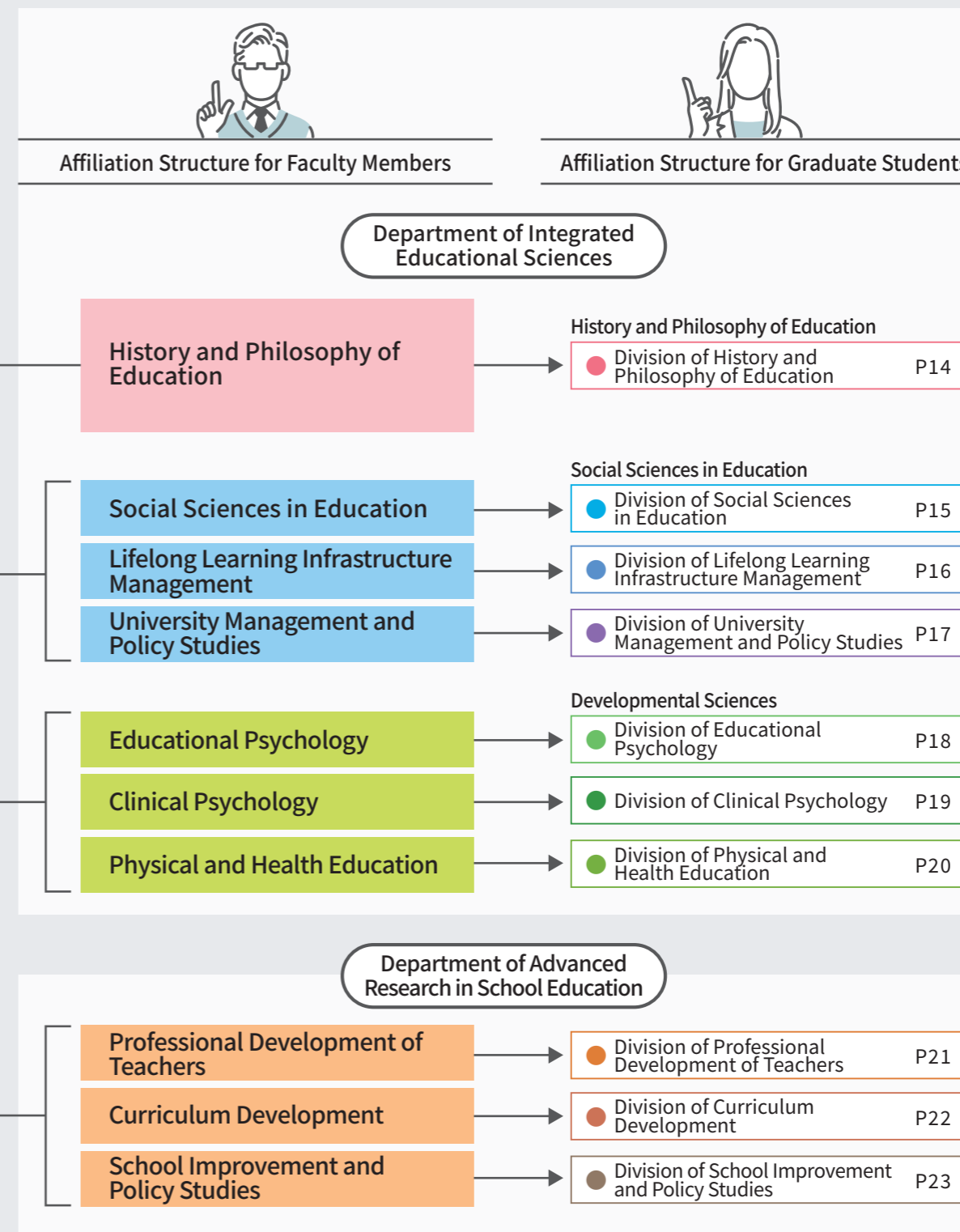


The organizational structure of the Graduate School of Education and Faculty of Education (reorganized in 2024) is shown in the figure below. The courses that were once subdivided have been organized into three divisions, namely History and Philosophy of Education, Social Sciences in Education, and Developmental Sciences. Today, the education at the Faculty and the Graduate School is administered systematically, with these divisions and the Department of Advanced Research in School Education as the basic units.

Read the QR code for details ▶



Graduate School of Education



Message from the faculty
11 Studies

Messages from professors about the courses

Read the QR code
for details ▶



Jun YAMANA
Professor
<Philosophy of Education>

We explore the heart of education based on history and ideas, with an eye on the betterment of relations between humans and society.

History and Philosophy of Education

In this course of study, you will gain a fundamental understanding of how humans and society/culture interact, while looking at issues facing education in real life. Referring to history, philosophy, anthropology, and clinical studies, among others, the course will guide you into studies for in-depth exploration of connections between past and present, humans and cultures, politics and ethics, theory and practice, and academic knowledge and its institutions.



Yuki HONDA
Professor
<Sociology of Education>

We study education-related phenomena using quantitative and qualitative data, referring to sociology and comparative education.

Social Sciences in Education

Social Science in Education, based on the sociology of education and comparative education, pursues empirical and theoretical studies on education-related phenomena in a broad sense. With its focus on teaching research and analysis methodologies, this course of study offers opportunities to study a wide range of issues around the theme of educational inequality and international education, among others.



Kyo KAGEURA
Professor
<Library and Information Science>

We pursue the studies of lifelong learning and of the theory and practice of infrastructure conducive to the learning.

Lifelong Learning Infrastructure Management

In this course, we study lifelong learning activities and the organizations, institutions, environments and technologies that support such activities, based on the understanding that activities people pursue after or outside the framework of formal education constitute the learning process. The course is for those who want to discover what learning can be from a perspective that goes beyond conventional understandings of education and learning.



Yuto KITAMURA
Professor
<Humanities and Social Sciences Education>

Understanding education from the perspectives of the ground. We examine the essence of the phenomena and mechanisms that are called “education” in light of how they work in the classroom and other educational settings and under certain systems and policies.

Educational Practices and Policies

This course of study examines a variety of places for education as well as systems and policies, encompassing schools, education laws and educational systems, museums and libraries, and learning opportunities in local communities. You will learn to take a realistic approach suitable for each subject through not only lectures, but also seminars and practical training.



Akiko MOROZUMI
Professor
<University Management>

We study theoretical and practical education in relation to university management and higher education policy.

University Management and Policy Studies

This course of study was launched in 2005 to offer education for students who seek careers as administrators or policymaking staff members at universities and other institutions of higher education, researchers, and prospective leaders in this field. Since the majority of our students work full-time, the course of study is designed in such a way that enables students to earn a degree by attending evening and Saturday classes, which has attracted students with diverse backgrounds.



Sachiko KIYOKAWA
Associate Professor
<Psychology of Learning and Instruction>

We explore and practice education based on psychological methodology and knowledge.

Educational Psychology

Based on psychological methodology and knowledge, this course of study aims to offer education designed for researchers and practitioners who pursue application and practice in a wide range of fields. The course is taught by professors who specialize in four areas of study, namely psychology of learning and instruction, developmental psychology, educational cognitive sciences, and educational information sciences.



Miho TAKAHASHI
Professor
<System Theory and Practice of Clinical Psychology>

Based on a scientist-practitioner model, we offer courses designed for future leaders in clinical psychology.

Clinical Psychology

This course of study aims to help students acquire a perspective rooted in respect for their own cultures, coupled with a mindset open to diversity, so that they will become intellectual experts in clinical psychology who will explore new horizons toward the future.



Fumiharu TOGO
Professor
<Educational Physiology>

Elucidating how the body, mind, and brain work.

Physical and Health Education

In this course, we conduct basic and practical research on various phenomena related to the human body, mind, brain, and education that exist in schools, families, and society. We are engaging in research on elucidating the basic mechanisms related to physical exercise, sleep, emotion, and development, as well as physical and mental health issues and educational applications.



Tomonori ICHIYANAGI
Associate Professor
<Research on Classroom Lessons>

We pursue the development of classes, curricula, and pedagogical expertise, while learning from educational practice.

Professional Development of Teachers

This course of study pursues the development of courses, curricula, and pedagogical expertise, which can be considered the core of achieving the advancement of school education. We aim to create high quality learning environments and advance students' qualifications and capabilities of teachers based on detailed educational practice.



Nobuyuki FUJIMURA
Professor
<Mathematics and Science Education>

We empirically explore learning and instruction in subjects and learning that transcends subjects for future generations.

Curriculum Development

This course of study will engage you in empirical research in domestic and international fields to explore how lessons and curricula in each subject and learning that transcends subjects can be created and provided for future generations. Our discussions will be based on the theory and methodology of sociology, psychology, literature, linguistics, and comparative research, among others.



Yusuke MURAKAMI
Professor
<Education Politics and Policy>

We acquire an in-depth understanding of how education is operated and what educational systems should do.

School Improvement and Policy Studies

In this course, we engage in research and development related to educational administration and finance, law and institution, school management, and policies, among others, which are essential to advance school education. We will illuminate the state of governance that supports the practice of education, so that we will explore issues facing the governance and what improvements should be made.

A place of learning that allows students to fully pursue any research projects and interests



Read this QR code for the whole text of the interview ▶



What can students expect to learn and experience in the Faculty of Education at the University of Tokyo? Our alumni know all about what is so appealing about the school. Dean Masaaki Katsuno invited Nahoko Hori (Class of 2017) as the representative of alumni for an in-depth interview.



Masaaki Katsuno **Nahoko Hori**
Dean

Ms. Hori graduated from the Educational Practices and Policies Course and joined NHK in 2017. While working as a newscaster for “Ohayo Nippon” (Good Morning, Japan), she engaged in news coverage and production of programs about human rights. In 2023, she left NHK to join a think tank, and enrolled in the Graduate School of Education at the University of Tokyo in 2025.

I was privileged to work with people with diverse values at practical training in a regional town. What I learned from the experience shaped the foundation of my life after that.

Professor Masaaki Katsuno (MK): I would like to ask you about your studies at the University of Tokyo's Faculty of Education as well as your career. First, would you talk about why you chose the Faculty of Education?

Nahoko Hori (NH): My mother was an elementary school teacher, and so education has always held a special place in my heart, which was one main reason for my choice. Helping to create a just and inclusive society has always been my passion, and my mother showed me it was education that would serve as the foundation of that society. I decided to enroll in the Faculty of Education because I wanted to learn something that would bring me as close as possible to the realization of a just and inclusive society.

MK: Is there any class you had at the Faculty of Education that stands out in your memory?

NH: I clearly remember doing

fieldwork as part of a seminar on social education in Iida City, Nagano Prefecture. The participants in the fieldwork had diverse backgrounds, experiences, and views. We were divided into small groups to stay at local guest houses where we got to talk to local people, and we also did some activities with local high school students. This was an invaluable experience because learning to put different perceptions into words relativized the world as I saw it.

I send cheers to you, my fellow graduate student and inquiring mind eager to keep growing

MK: After graduating, you joined NHK where you were an announcer and also involved in the making of programs that dealt with human rights issues, including disabilities and gender equality, domestic violence, and LGBTQ+. At the think tank you joined after NHK, you engaged in investigative research connected to your aspirations to create a just and inclusive society. Now you are set to start your graduate studies. What exactly do you plan to study?

NH: Some people who belong to a

social majority face various human rights issues as their own problems and engage in activities to correct injustice. I intend to study what kind of experiences and learnings brought them to think and do what they do.

MK: I see. Finally, would you give a message to all prospective students of the Faculty of Education or the Graduate School of Education?

NH: The University provides an environment where you can pursue any research projects and interests. I am certain that studying education will lead you to realize why you think what you think. I believe that, when we acknowledge our own thought processes, we will be able to think deeply about our society. I still know so little, and that is why I would like to keep learning. I hope to study education, that is, what our society is like, with you all.



Faculty of Education

- History and Philosophy of Education Course P08
- Social Sciences in Education Course P09
- Educational Practices and Policies Course P10
- Educational Psychology Course P11
- Physical and Health Education Course P12

Under the Department of Integrated Educational Sciences, the Faculty of Education has three divisions and five courses of study. The Divisions of History and Philosophy of Education offers the History and Philosophy of Education Course; the Division of Social Sciences in Education offers the Social Sciences in Education Course and the Educational Practices and Policies Course; and the Division of Developmental Sciences offers the Educational Psychology Course and the Physical and Health Education Course. While these Courses are based on a variety of disciplines (e.g., humanities, sociology, psychology, and physiology) and center mostly on education at school, they also deal with a wide range of fields, such as daycares, museums, libraries, NPOs, and healthcare facilities, in order to offer unique learning.

Department of Integrated Educational Sciences History and Philosophy of Education Course



The History and Philosophy of Education Course deals with the most basic parts of educational studies. It takes approaches based on the four areas of studies broadly classified as humanities, namely philosophy, history, anthropology, and clinical philosophy, in order to tackle the most fundamental questions about education: “What is education?” “What is the definition of ‘good education?’” and “What does it mean to be a good person and good citizen?” This Course is for students who seek to contemplate education and human beings.

Read the QR code for details ▼



Lecture List

Lectures and seminars by the staff of the Course include the following:

Introduction to Basic Theories of Education (all faculty members of the Course)	Seminar in Japanese Educational History (Yoshihiro KOKUNI)
Introduction to History of Education in the Occident (Sayaka OKI)	Seminar in Values and Education I (Katsushige KATAYAMA)
Introduction to Philosophy of Education (Jun YAMANA)	Seminar in Clinical Phenomenology of Education (Rui OTSUKA)
Introduction to Educational Thought and Anthropology (Shigeo KODAMA)	History of Sciences and Humanities (Sayaka OKI)
Introduction to Japanese Educational History (Yoshihiro KOKUNI)	Seminar in Ethics of Education (Koki HIRAIISHI)
Introduction to Clinical Approach to Education (Rui OTSUKA)	Morality and Education [Special Topic in Basic Theories of Education] (Koki HIRAIISHI)
Seminar in Philosophy of Culture and Education (Jun YAMANA)	

Staff



Jun YAMANA
Professor
(Philosophy of Education)



Yoshihiro KOKUNI
Professor
(History of Japanese education)



Sayaka OKI
Professor
(Western Educational History)



Rui OTSUKA
Professor
(Educational Clinical Studies)



Katsushige KATAYAMA
Associate Professor
(Educational Anthropology)



Koki HIRAIISHI
Associate Professor
(Philosophy of Education)

Themes of Graduation Theses

List of Recent Thesis Topics

- Study of Social Disadvantage Experienced by the “Fragile,” with the Criticism of Social Model of Disability as the Starting Point
- Theory of Education for Phenomena-oriented Worldviews with the Focus on Agential Realism and Philosophy of Organicism
- Significance of Francis Bacon’s Theory of “Tradition of Knowledge” in the History of Educational Thought
- Democracy and Citizenship Education in Sweden
- Historical Study of Care Assistance at Tokyo Metropolitan Koumei Special Education School

Message from an Alumnus

When I worked as an undergraduate volunteer for educational support, one of my students said to me, “I couldn’t find meaning in studying.” These words prompted me to question the values I’d had, and that was why I chose this course of study. Learning to question what I considered normal and to enjoy the state of not knowing as basic attitudes made me aware of my fixed mindset, and brought me to the belief that it is difficult, yet interesting, to lead a life with people different from me. I think that this conviction serves as an invaluable foundation of how I live my life today.

Yukina Uchiyama | Undergraduate Class of 2020
Rakuten Group, Inc.

Department of Integrated Educational Sciences Social Sciences in Education Course



In the Social Sciences in Education Course, students learn to examine “education as a social and cultural phenomenon” as a whole from multiple points of views according to the theory and methodology of social sciences centered on sociology. The required course “Training in Research Methods for the Sociology of Education” offers hands-on experience of social research process in its entirety, from setting a theme and collecting data to conducting an analysis on a computer. Each year, students present their research findings at the May Festival.

Read the QR code for details ▼



Lecture List

Lectures and seminars by the staff of the Course include the following:

Introduction to the Sociology of Education (Takayasu NAKAMURA)	Change and Problems of Japanese Society (Yuki HONDA)
Introduction to Higher Education Studies (Hirofumi TAKI)	Seminar on Theories of the Sociology of Education (Yuki HONDA)
Introduction to Comparative Education (Nukaga/Kitamura/Ogisu)	Theory and Practice of Fieldwork (Misako NUKAGA)
Training in Research Methods for the Sociology of Education I (Nihei/Taki/ Terazawa/Nishimura)	Methods and Approaches in Comparative Sociology (Hirofumi TAKI)
Training in Research Methods for the Sociology of Education II (Nihei/Taki/ Terazawa/Nishimura)	International Education Development (Takayo OGISU)
Training in Research Methods for the Sociology of Education III (Nihei/Taki/ Terazawa/Nishimura)	Quantitative Social Sciences in Education (Yuka UZUKI)
Training in Research Methods for the Sociology of Education IV (Nihei/Taki/ Terazawa/Nishimura) (Nihei/Taki/ Terazawa/Nishimura)	Quantitative Educational Research Methodology (Sho FUJIWARA)
Dissertation Research in Sociology of Education, Comparative Education and Higher Education (all faculty members of the Course)	How to Describe Schools: Research Methodology on Schooling (Jun YAMASHITA)
Tutorial in Sociology of Education, Comparative Education and Higher Education (all faculty members of the Course)	Student Guidance and Career Guidance (Hiroki YAMAMOTO)
	Education and Society (Chiyo NAKAMURA)
	Career Guidance and Pupil Guidance (Masahiro SUZUKI)
	The Sociology of Families and Intimate Relationships (Masataka HONDA)

Staff



Yuki HONDA
Professor
(Sociology of Education)



Takayasu NAKAMURA
Professor
(Comparative Education Systems Theory)



Norihiro NIHEI
Professor
(Sociology of Education)



Misako NUKAGA
Professor
(Comparative Education)



Hirofumi TAKI
Associate Professor
(Higher Education)



Takayo OGISU
Associate Professor
(Comparative Education)

Themes of Graduation Theses

List of Recent Thesis Topics

- Quantitative Study on the Chronological Change of Student Culture: Critical Review of Students’ Increasingly Serious Attitudes
- What Is Happening in the University of Tokyo’s Intercollege Circles? –Inequality Guarded by the Motto “No Female Students of the University of Tokyo”
- Internationally Common Qualifications and Attitudes Required of “Ideal” Teachers: Study on Teachers in Japan, the United States, Sweden, and the United Arab Emirates
- Landscape of Senior High School Enrollment in the Tokyo Metropolitan Area: Comparison of Counseling on the Choice of High Schools at Junior High Schools and Part-time Preparatory Schools
- How do Women in Tokyo Perceive Safety in Urban Spaces? –The Impact of Urban Development Projects –

Message from an Alumnus

I have Social Sciences in Education to thank for my conscious effort to maintain a flexible view on society even as I’m no longer a university student. In my junior year, I took some famous classes such as Introduction to the Sociology of Education and research training for in-depth learning. In my senior year, I took the plunge and did off-campus research, including interviewing people, for my graduation thesis. Exploring my subject in societal contexts based on raw data was challenging, yet I enjoyed it. During the two years, I was privileged to receive thoughtful guidance from my professors and had heated discussions with my friends and other students in different years as part of my daily life, which broadened my horizons.

Misa Teshigawara | Class of 2019, Graduate of the Social Sciences in Education Course. After working at a financial institution, Ms. Teshigawara currently pursues a career as a translator.



Department of Integrated Educational Sciences Educational Practices and Policies Course



In this Course, students learn to view education through relations between a variety of places and systems/policies for education, which include schools, education laws and educational systems, museums and libraries, and learning opportunities in local communities. The curriculum consists of courses in four disciplines, namely educational administration and finance, school education, social education, and library and information science. While acquiring the basic knowledge in these areas of study, students will take on-the-ground tours and work on research as part of their coursework. The Course also offers classes for students who seek to become certified curators, librarians, or social educators, among others.

Read the QR code for details ▼



Lecture List

Lectures and seminars by the staff of the Course include the following:

○ Introductions

Theories of Adult Education I (Jeongyun LEE)
Theories of Adult Education II (Takanori UEDA)
Introduction of Library and Information Studies (Shuntaro KAWAMURA)
Introduction to Research on Teacher Development (Sachiko ASAI)
Teaching Methods (Yasuhiko FUJIE)
Curriculum Studies (Masamichi UENO)
Introduction to Comparative Education (Yuto KITAMURA)
Introduction to Study on School Education (Yuto KITAMURA, Yasuhiko FUJIE, Sachiko ASAI)
Educational Administration and Educational Finance (Masaaki KATSUNO, Yusuke MURAKAMI, Akihiro HASHINO)

○ Basic seminars

Seminar in Adult and Lifelong Education II (Kendo OTAKA); Seminar in Educational Administration and School Management I (Yusuke MURAKAMI); Seminar of Research on Teaching and Curriculum IV (Yasuhiko FUJIE, Sachiko ASAI); Seminar in the Analysis of Information and Documents (Rei MIYATA); Seminar on the Basics of Educational Research (Kyo KAGEURA)

○ Seminars

Seminars in Field Research on Educational Administration I and II (Masaaki KATSUNO, Yusuke MURAKAMI, Akihiro HASHINO); Seminar in Educational Administration and School Management II (Akihiro HASHINO); Seminar of Research on Teaching and Curriculum III (Yasuhiko FUJIE, Sachiko ASAI); Seminar in Adult and Lifelong Education I (Hironobu SHINDO); Seminar in Adult and Lifelong Education III (Jeongyun LEE); Special Studies in Museum Activities (Hironobu SHINDO); Education and Language Processing (Rei MIYATA); Seminar in Information Service (Yasunori SAITO); Skills for Understanding Lectures: Using MIT Linear Algebra Video Lecture as a Case I (Kyo KAGEURA)

Staff



Jeongyun LEE
Professor
(Social Education)



Hironobu SHINDO
Associate Professor
(Theory of Lifelong Learning)



Kyo KAGEURA
Professor
(Library and Information Science)



Shuntaro KAWAMURA
Associate Professor
(Library and Information Science)



Rei MIYATA
Lecturer
(Library and Information Science)



Masaaki KATSUNO
Professor
(School Leadership and Management)



Yusuke MURAKAMI
Professor
(Education Politics and Policy)



Akihiro HASHINO
Associate Professor
(Education Policy and Finance)



Kazuko TAKAHASHI
Professor
(Language Education)



Yuto KITAMURA
Professor
(Humanities and Social Sciences Education)



Yasuhiko FUJIE
Professor
(Research on Teaching and Curriculum)



Sachiko ASAI
Professor
(Research on Teaching and Curriculum)

Themes of Graduation Theses

List of Recent Thesis Topics

- Theory and Practice of Structural Learning in Post-war Elementary Education: Hikaru Okiyama and the History of the National Society for Research on Structural Learning
- Impacts of Loans and Scholarships on Students' Income and Expenditure: Quantitative Analysis with the Focus on the Degrees of Anxiety over Repayment
- Sustainable Management of NPOs Providing Places for Emotional Support: Study of Sustainable Models based on Comparison of Case Studies
- Analysis of Characteristics of Modern Japanese Textbooks: Comparison between Contemporary Japanese Language and Japanese Language (Logic)
- Art Appreciation and Hands-on Learning in Collaboration with Schools as Viewed from External Organizations: From Interviews with NPOs and Culture Centers

Message from an Alumnus

I decided to study comparative education based on my experience learning in braille and international exchange through music, and so the Division was my dream place for learning. I studied under the guidance of Professor Yuto Kitamura, who taught us the joy of connecting and exploring our academic interests and experiences. I am also grateful to many people who offered me interdisciplinary help to delve deeper into my studies. The experience remains as the foundation of the social activities I engage in with enthusiasm. I hope you will enjoy learning there so that you will spread your wings into a future where you will fulfill your potential.

Rika Sugata

Undergraduate Class of 2022. Ms. Sugata works at a foreign financial institution while working on a variety of social activities as a pianist.

Department of Integrated Educational Sciences Educational Psychology Course



This Course aims to provide education designed for researchers and technical experts in psychology who apply and practice their skills in a wide range of fields based on psychological methodology and knowledge. Faculty members in the Divisions of Educational Psychology, Clinical Psychology, Professional Development of Teachers, and Curriculum Development in the Graduate School work together to offer the education, so that students will acquire knowledge of psychology in a broad area of human understanding, ranging from learning and instruction, development, clinical studies, cognitive science, and information science.



Lecture List

Lectures and seminars by the staff of the Course include the following:

Psychology of Learning and Instruction (Nobuyuki FUJIMURA)
Developmental Psychology (Etsuko HARYU)
Experiments in Educational Psychology I (all faculty members of the Course)
Experiments in Educational Psychology II (all faculty members of the Course)
Experiments in Educational Psychology III (all faculty members of the Course)
Guided Research in Educational Psychology (all faculty members of the Course)
Research Methods for Qualitative Psychology II (Masahiro NŌCHI)
Seminar in Life-span Developmental Psychology (Toshihiko ENDO)
Seminar on Psychology of Learning and Instruction II (Tomonori ICHIYANAGI)

Seminar in Psychology (Yu NAKASHIMA and others)
Practical Training in Psychology (Remi INAYOSHI and others)
Practical Training of Cognitive Counseling I (Yuri UESAKA)
Psychological Statistics III (Satoshi USAMI)
Psychology of Human Socioemotional Development (Toshihiko ENDO)
Cognitive Counseling and its Applications I (Yuri UESAKA)
Professionalism of Licensed Psychologists (Masahiro NŌCHI and others)
Educational Psychology I (Sachiko KIYOKAWA)

Staff



Toshihiko ENDO
Professor
(Developmental Psychology)



Nobuyuki FUJIMURA
Professor
(Psychology of Learning and Instruction)



Etsuko HARYU
Professor
(Developmental Psychology)



Kensuke OKADA
Associate Professor
(Educational Information Sciences)



Sachiko KIYOKAWA
Associate Professor
(Psychology of Learning and Instruction)



Satoshi USAMI
Associate Professor
(Educational Information Sciences)



Tomonori ICHIYANAGI
Associate Professor
(Psychology of Learning and Instruction)



Yuri UESAKA
Associate Professor
(Educational Cognitive Science)



Masahiro NŌCHI
Professor
(Curriculum Development of Clinical Psychology)



Miho TAKAHASHI
Professor
(System Theory and Practice of Clinical Psychology)



Ryu TAKIZAWA
Associate Professor
(Curriculum Development of Clinical Psychology)



Reiko OTAKI
Instructor
(Developmental and Clinical Psychology)

Themes of Graduation Theses

List of Recent Thesis Topics

- How High School Students Deepen Their Conceptual Understanding by Examining Solutions Presented by Generative AI
- The Effect of Childhood Disciplinary Language on Avoiding Moral Violations in College Students
- The Interaction between Knowledge about Mental Illness and Self/Others Acceptance on Stereotype of Schizophrenia
- Effects of Uncooperative Speech on Collaborative Problem-solving Process
- Effects of Co-editing Functions Offered by ICT devices on Group Work

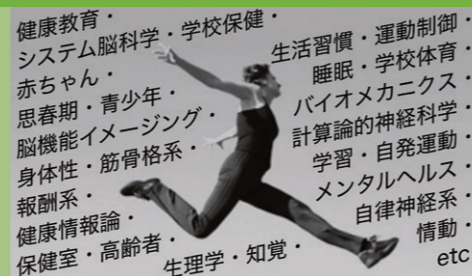
Message from an Alumnus

In the Educational Psychology Course, you can acquire an in-depth understanding of the human mind in a wide range of contexts. I enrolled in the Course because I was interested to learn about parent-child relationships and mental health, but, when it was time to decide on the theme of my graduation thesis, I completely changed theme to pursue a different interest, which was how people learn. I regularly traveled to an elementary school during my senior year, and currently as a graduate student, I hope to work on a research project that will help children with lower academic achievement in their learning. What is great about this course of study is that you learn a variety of disciplines to find your own interest and delve deeply into it.

Natsuki Kanamori

Undergraduate Class of 2023
1st year in the Master's Program of the
Division of Educational Psychology in 2024

Department of Integrated Educational Sciences Physical and Health Education Course



The Physical and Health Education Course was established in 1998 for the first time in Japan, focusing on education of the body. The course conducts diverse research related to the human body, mind, brain, and education, and students can enter the course from either the liberal arts or science courses. Lectures, seminars, experiments, and practical training are all mainly conducted with 10 to 30 students, and actively incorporate the students' own presentations and participation.

Read the QR code for details ▼



Lecture List

Lectures and seminars by the staff of the Course include the following:

◎ Lectures [Course] (Faculty member)

Introduction to Physical and Health Education I [Introduction to Physical and Health Education] (Yoshiharu YAMAMOTO/Daichi NOZAKI/Kenji MORITA)	Development of Mind and Brain [Seminar in Developmental Sciences] (Gentarō TAGA)
Introduction to Physical and Health Education II [Introduction to Physical and Health Education] (Gentarō TAGA/Fumiharu TOGO/Atsushi NISHIDA)	Safety and Security Education [Seminar in Developmental Sciences] (Fumiharu TOGO)
Laboratory in Physical and Health Education I [Seminar in Physical and Health Education] (Daichi NOZAKI/Fumiharu TOGO/Takuji HAYASHI)	Introduction to Human Nutrition [Lectures on Developmental Sciences] (Yukari TAKEMI)
Laboratory in Physical and Health Education II [Seminar in Physical and Health Education] (Daichi NOZAKI/Fumiharu TOGO/Takuji HAYASHI)	Functions and Dysfunctions of the Brain [Lectures on Developmental Sciences] (Kenji MORITA/Arvind KUMAR/Ayaka KATO)
Laboratory in Physical and Health Education III [Seminar in Physical and Health Education] (Daichi NOZAKI/Fumiharu TOGO/Takuji HAYASHI)	Functional Anatomy [Lectures on Developmental Sciences] (Tsukasa SASAKI)
Seminar in Teaching Methodology of Human Movement (Outdoor Activity in Summer) [Seminar in Physical and Health Education] (Daichi NOZAKI/Fumiharu TOGO)	Tutorial in Physical and Health Education [Tutorial in Physical and Health Education] (all faculty members of the Course)
Methodology of Physical and Health Education [Seminar in Developmental Sciences] (Hiroharu KAMIOKA)	Introduction to the Theories of Diversity and Inclusion [Lectures on Developmental Sciences] (Yoshihiro KOKUNI/Daichi NOZAKI/Shinichiro KUMAGAYA/Takeo KONDO/Fumiharu TOGO/Misako NUKAGA/Masahiro NŌCHI/Ryoji HOSHIKA/Rui OTSUKA/Yuriko IINO)
Biodynamics [Seminar in Developmental Sciences] (Daichi NOZAKI/Kenji MORITA)	Practical Sciences of Cooperative Human-relationships, Lifestyle, Brain and Development [Lectures in the College of Arts and Sciences]
Studying Epidemiology in the Field of Education [Seminar in Developmental Sciences] (Fumiharu TOGO/Tsukasa SASAKI)	Practical Studies on Health and Physical Education A (Hidenori AOKI/Hiroharu KAMIOKA)
Educational Physiology [Seminar in Developmental Sciences] (Yoshiharu YAMAMOTO/Toru TAKUMI)	Practical Studies on Health and Physical Education B (Hidenori AOKI)

Staff



Yoshiharu YAMAMOTO
Professor
(Educational Physiology)



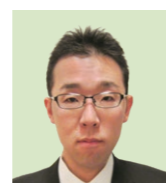
Gentarō TAGA
Professor
(Developmental Brain Sciences)



Daichi NOZAKI
Professor
(Physical Education)



Fumiharu TOGO
Professor
(Educational Physiology)



Kenji MORITA
Associate Professor
(Physical Education)

Themes of Graduation Theses

List of Recent Thesis Topics

- Mood Variability over a Week in Workers and Its Related Factors: A Latent Class Analysis Study
- Efficient Use of a Ground Reaction Force in Running
- Effect of Spatial Distance on the Prediction of Timing
- Effect of Sleep Quality on Juvenile Learning Ability
- Relations between Model-Based/Model-Free Learning and Individual Attributes

Message from an Alumnus

I believe that we need imagination when we try to open our eyes to the world outside of ourselves and solve problems, and that imagination can be cultivated through the experience of immersing oneself in something. I also believe that the world will be a better place when people have more imagination. The Physical and Health Education Course, with its experienced faculty and well-equipped facilities, enables you to pursue any interests related to body and mind. I am certain you will find it fascinating. I highly recommend that you try immersing yourself in learning in the Course.

Heisuke Tanaka

Class of 2024, Graduate of the Physical and Health Education Course

Graduate School of Education

- Division of History and Philosophy of Education P14
- Division of Social Sciences in Education P15
- Division of Lifelong Learning Infrastructure Management P16
- Division of University Management and Policy Studies P17
- Division of Educational Psychology P18
- Division of Clinical Psychology P19
- Division of Physical and Health Education P20
- Division of Professional Development of Teachers P21
- Division of Curriculum Development P22
- Division of School Improvement and Policy Studies P23

The Graduate School of Education consists of two departments: the Department of Integrated Educational Sciences and Department of Advanced Research in School Education. The Department of Integrated Educational Sciences is designed to train students who seek to become researchers with advanced ability to explore phenomena related to education, and who look to develop their careers as highly skilled experts in various fields of education. It comprises three majors and seven divisions. The Department of Advanced Research in School Education comprises three divisions that closely interrelate. It is designed to train students who seek to become practical researchers in school education, and who look to develop their careers as highly skilled experts in educational practice and educational administration. This Department has a program that allows students in other University of Tokyo graduate schools to take its courses as their minor.

Department of Integrated Educational Sciences Division of History and Philosophy of Education



The Division of History and Philosophy of Education takes approaches based on the four areas of studies, namely philosophy, history, human studies, and clinical philosophy, to tackle the most fundamental questions about education. It offers colloquia for all students in the Division, in addition to seminars and thesis guidance by faculty members, so that students receive advice on their studies from any faculty members and graduate students. The Division also publishes an annual Bulletin edited by graduate students. The publication is available on the University of Tokyo's academic institution repository (UTokyo Repository).

Read the QR code for details ▼



Lecture List

Lectures and seminars by the staff of the Course include the following:

Seminar in Educational Thought [To question the publicness of education] (Shigeo KODAMA)
Basic Seminar in Educational Anthropology [Ethics of care and education] (Katsushige KATAYAMA)
Seminar in Educational Philosophy [To pursue the theory of collective memory and culture of remembrance] (Jun YAMANA)
Seminar in Japanese Educational History [To re-examine the post-war history of education] (Yoshihiro KOKUNI)
History of Higher Education and Research [To examine the history of higher education and research] (Sayaka OKI)
Seminar in Clinical Phenomenology [To take an approach based on educational practice] (Rui OTSUKA)
Seminar in Ethics of Education [To question the relation between education and truth] (Koki HIRAISHI)

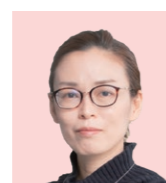
Staff



Jun YAMANA
Professor
(Philosophy of Education)



Yoshihiro KOKUNI
Professor
(History of Japanese education)



Sayaka OKI
Professor
(Western Educational History)



Rui OTSUKA
Professor
(Educational Clinical Studies)



Katsushige KATAYAMA
Associate Professor
(Educational Anthropology)



Koki HIRAISHI
Associate Professor
(Philosophy of Education)

Themes of Master's Theses

List of Recent Thesis Topics

- Introduction to "Pedagogy of Discomfort": Liminal Space between Critical Pedagogy and Feminist Pedagogy
- Arturo Escobar's Educational Theory of Autonomous Design: Possibility of Thinking with Others
- Reconsideration of "Teaching" in Jacques Rancière: Possibility of Political Subjectification in Poetic Education
- Struggles Observed in Independent Lives of People with Disabilities: Study on Practice by Katatsumuri no Kai (Society of Snails)
- Development of Symbiotic Childcare through Exchange Practices: Focusing on the Himawari-Kyoshitsu, a Daycare Facility for Children with Disabilities in the 1970s and 1980s
- Politics and Ethics in Judith Butler, with special attention to the Concept of Precariousness

Themes of Ph.D. Dissertations

List of Recent Thesis Topics

- Birth and Development of the Child Research of the Modern Kids & Youth Culture Research Center in the 1960s
- Hannah Arendt's Theory of Education that Connects Conservatism and Revolution: A Preliminary to the Criticism of Sovereign Education
- Historical Study of the Process for Incorporating Student Self-Government Activities into Schools and Curricula, with the Focus on the Establishment of Student Councils
- Development of a Rawlsian Theory of Civic Education

Department of Integrated Educational Sciences Division of Social Sciences in Education



In the Division of Social Sciences in Education, students learn to examine "education as a social and cultural phenomenon" as a whole from multiple points of views, which encompass international comparison and cross-cultural understanding according to the theory and methodology of social sciences centered on sociology. Students participate in study abroad programs and academic conferences, in addition to attending regular classes and writing papers, during their years in the graduate school to broaden their horizons. Alumni find employment at government agencies, think tanks, media companies, and other organizations in various industries. Many also enroll in doctoral programs to pursue their careers as researchers.

Read the QR code for details ▼

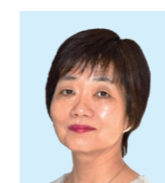


Lecture List

Lectures and seminars by the staff of the Course include the following:

Education, Work and Family in the Present Japanese Society (Yuki HONDA)	Research Methods in Sociology of Education (Sho FUJIWARA)
Research Issues in the Sociology of Education (Yuki HONDA)	Social Theories of Disability (Ryoji HOSHIKA)
Concepts in Sociology of Education (Takayasu NAKAMURA)	Quantitative Survey Design in Educational Research (Kenji ISHIDA)
Issues in Education and Selection (Takayasu NAKAMURA)	Social Embeddedness for Inequality Studies (Kenji ISHIDA)
Civil Society, State, and Education (Norihiro NIHEI)	Dissertation Research in Social Systems (Honda/Nihei/Hoshika)
Sociology of Discourse on Education (Norihiro NIHEI)	Dissertation Research in Higher Education (Hirofumi TAKI)
Qualitative Research Methods (Misako NUKAGA)	Dissertation Research in Educational Systems (Takayasu NAKAMURA)
Globalization and Education (Misako NUKAGA)	Dissertation Research in Comparative Education (Nukaga/Ogisu)
Sociological Perspectives on Education and Inequality I (Hirofumi TAKI)	Dissertation Research in Quantitative Sociology of Education (Miwa/Ishida/Yoda)
Sociological Perspectives on Education and Inequality II (Hirofumi TAKI)	Ethnicity, Nationalism and Education (Fumiko TAKAHASHI)
Comparative Education Theories and Methodologies (Takayo OGISU)	Family and Gender in Japan and Asia (Emiko OCHIAI)
Research on International Education Development (Takayo OGISU)	

Staff



Yuki HONDA
Professor
(Sociology of Education)



Takayasu NAKAMURA
Professor
(Comparative Education Systems Theory)



Norihiro NIHEI
Professor
(Sociology of Education)



Misako NUKAGA
Professor
(Comparative Education)



Hirofumi TAKI
Associate Professor
(Higher Education)



Takayo OGISU
Associate Professor
(Comparative Education)

Themes of Master's Theses

List of Recent Thesis Topics

- Quantitative Sociological Study of Housework Done by Children and Gender: Observation of Mothers Who Teach Their Children How to Cook and Clean their Places
- Practice of Helping Truant Pupils Return to School and Dilemmas That Occur: Ethnography of Educational Support Centers
- Contemporary History of Anti-poverty Movement: Re-examining the Rise and Fall of the Social Movement and the Mobilization Model
- Academic and Career Path Formation for Kurdish Students of Turkish Nationality Seeking Asylum: How Meaning Is Given to Learning at a Part-time High School
- Student Guidance on the Choice of Universities at Preparatory Schools in the Provinces and How These Schools' Students View Their Post-High School Paths: From Quantitative Analysis of a High School Student Survey and Interviews with High School Alumni

Themes of Ph.D. Dissertations

List of Recent Thesis Topics

- Clarification of the Inequality Generation Mechanism through Educational Backgrounds
- Empirical Study on Regular Factors behind the Pros and Cons of Capital Punishment in Japan
- Policies on the High School Curriculum for Contemporary Social Studies and the Process of Textbook Transformation: Re-examining the Pendulum Model of Curriculum Change
- Hours of Children's Day-to-Day Lives and Social Class: How People Are Grouped and What They Have in Common
- Quality Assurance for a Professional Training Curriculum Re-examined from the Perspective of University Faculty: Proposal of the Re-interpretation Model through Case Studies in Medical Education

Department of Integrated Educational Sciences Division of Lifelong Learning Infrastructure Management



In this Division, students learn to view various activities people engage in within and outside school education as learning opportunities, and study people's lifelong learning activities coupled with infrastructure that supports them (e.g., organizations, systems, environments, and technologies). The Division consists of the Laboratory of Social Education and Lifelong Learning, which mostly studies activities for social education and lifelong learning, and the Laboratory of Library and Information Science, which studies libraries and information media, among others. These two research labs work collaboratively to advance their research on education.



Lecture List

Lectures and seminars by the staff of the Course include the following:

Basics of research

- Theory of Lifelong Learning I (Atsushi MAKINO)
- Research Methods of Library and Information Science (Kyo KAGEURA)
- Topics in Library and Information Science (Kyo KAGEURA)

Special research

- Seminar in Lifelong Learning I (Jeongyun LEE)
- Seminar in Lifelong Learning II (Hironobu SHINDO)
- Theory and Methods of Evaluating Programs (Tomoyuki YASUDA)
- Transformative Learning/Education for Sustainable Future (Sachi NINOMIYA-LIM)
- Theory of Library and Information Studies (Shuntaro KAWAMURA)
- Study of the Structure of Information Media (Rei MIYATA)
- Scholarly Communication (Ui IKEUCHI)
- Bibliometrics, Scientometrics (Masaki NISHIZAWA)

Dissertation guidance

- Dissertation Research in Lifelong Learning (Jeongyun LEE and Hironobu SHINDO)
- Dissertation Research in Library and Information Studies (Kyo KAGEURA, Shuntaro KAWAMURA, Rei MIYATA, Ui IKEUCHI)



Staff



Jeongyun LEE
Professor
(Social Education)



Hironobu SHINDO
Associate Professor
(Theory of Lifelong Learning)



Kyo KAGEURA
Professor
(Library and Information Science)



Shuntaro KAWAMURA
Associate Professor
(Library and Information Science)



Rei MIYATA
Lecturer
(Library and Information Science)

Themes of Master's Theses

List of Recent Thesis Topics

- A Study of Career Moves by Chinese Students Who Studied and Found Employment in Japan with the Focus on Causes and Processes of Changing Jobs
- Quantitative Analysis of Exhibition Commentaries at Scientific Museums: Comparison between the Exhibition Commentary for "Evolution of Life: Exploring the Mysteries of Dinosaur Evolution" at the National Museum of Nature and Science, and the Description for the New Edition of Shogakukan NEO: Illustrated Guide to Dinosaurs
- Learning Space at a University Library in Light of Changes in the Needs of Users: Case Study of the Library Plaza (Annex), the University of Tokyo General Library
- Study of "Adult Ballet" through Stories of Otona-rina (Adult Ballerina) with Citations from Arguments by D. Jones and R. Stebbins
- Study for Descriptions of Differences between Translations: Sophistication of Metalanguages and the Development of Technology for Automatic Division for Translated Documents
- Residents' Participation and Learning to Resolve a Local Community's Problems: Case Study of Activities by Residents in Itabashi Ward, Tokyo

Themes of Ph.D. Dissertations

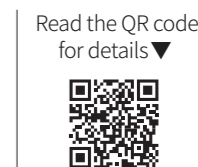
List of Recent Thesis Topics

- Development and Features of Community Colleges in Taiwan: From a Field Survey of Local Students
- Research on Japanese Typefaces and Typeface Customization System Designed for Readers with Developmental Dyslexia
- Study of Social Pedagogy and Professions in Sweden from the Perspective of Educational Welfare
- Analysis of Characteristics of Books in University Libraries That Consider the Attributes of the Universities, with the Focus on the Quantities and Attributes of Books in Collections
- Study of the Process for Organizing a Local Culture during a Municipality's Educational Reforms in the 1970s and thereafter, with the Focus on the Amami Islands in Kagoshima Prefecture
- Structure and Demonstration of Translation Exercises Using Metalanguages for Systems of Source Texts' Attributes and of Issue Categorization

Department of Integrated Educational Sciences Division of University Management and Policy Studies



In this Division, students pursue advanced and practical education and research connected to university management policies. Designed for administrators, policy-making staff and regular staff at universities or other institutions of higher education as well as university graduates, the Division provides theoretical and practical education related to university management and higher education policies. In doing so, it aims to help students become researchers and future leaders in the new area called university and higher education studies. Classes and seminars are offered mostly on Saturdays so that practitioners and other students with a full-time job can attend.



Lecture List

Lectures and seminars by the staff of the Course include the following:

Basics of research

- Higher Education Policy (Akihiro ASONUMA)
- Introduction to Higher Education (Akihiro ASONUMA)
- Management of University (Akiko MOROZUMI)
- Comparative Study in Universities (Hideto FUKUDOME)
- Seminar on Higher Education Policy and Management (2) (Akihiro ASONUMA, Hideto FUKUDOME, Akiko MOROZUMI)
- Research Methods for Higher Education Policy and Management (Akihiro ASONUMA, Hideto FUKUDOME, Akiko MOROZUMI)

Topics in policy and management

- Topics in Higher Education Policy and Management (1) (Hideto FUKUDOME, Osamu TOMURA)
- Topics in Higher Education Policy and Management (2) (Akihiro ASONUMA, Keiichiro YOSHINAGA, Akiyoshi YONEZAWA, Shinichi MIZOKAMI)
- Comparative Study in University Management (1) (Hideto FUKUDOME)
- Case Study in University Management (2) (Akiko MOROZUMI, Chun-Yi Tan)

Case analysis/Empirical analysis

- Methods and Analyses of Surveys in Higher Education (1) (Naoki OHTAWA)
- Methods and Analyses of Surveys in Higher Education (2) (TBD)

Research guidance

- Individual Tutorial in University Management and Higher Education Policy (Akihiro ASONUMA, Hideto FUKUDOME, Akiko MOROZUMI, Akiyoshi YONEZAWA, Shinichi MIZOKAMI)



Staff



Akihiro ASONUMA
Professor
(University Policy Studies)



Hideto FUKUDOME
Professor
(Historical and Comparative Higher Education)



Akiko MOROZUMI
Professor
(University Management)

The Division also focuses on practical education, and invites well-known researchers/scholars and senior staff members of the Ministry of Education, Culture, Sports, Science and Technology as special guest lecturers or seminar instructors.

Themes of Master's Theses

List of Recent Thesis Topics

- The Current Situation and Background of Research Activities Based on the Free Ideas of Early-Career Scientists: An Interview Survey
- The Formation and Introduction Process of the System of Management in Universities by a Single National University Corporation: A Case Study of the Tokai National Higher Education and Research System and the Nara National Institute of Higher Education and Research
- Formation of Women's Universities in Japan: A Case Study of Tsuda University in the Postwar Era
- Why is Diversity Required in Admissions Selection: Facts and Backgrounds of Private Universities
- Shared Leadership in Universities: Based on the Promotion of Internationalization by the Shibaura Institute of Technology

Themes of Ph.D. Dissertations

List of Recent Thesis Topics

- The Publicness of University in Japan: From Conceptual Analysis to Empirical Studies
- A Study on the Determinants of University Students' Autonomous Learning Attitudes
- Stratification of Transnationally Mobile Academics: The Case of Japanese-Trained Chinese PhDs
- Studies on University-Owned Enterprises as boundary spanning units
- The Achievements of Korean Universities' "Study Abroad Programs" in the Context of Student Mobility Among East Asian Universities

Department of Integrated Educational Sciences Division of Educational Psychology



The Division's faculty members specialize in psychology of learning and instruction, developmental psychology, educational cognitive science, or educational information sciences. Psychology of learning and instruction deals with learning, and teaching that supports learning; developmental psychology with how emotion and cognition develop; educational cognitive science with learning and cognitive activities in real-life settings; and educational information sciences with how to measure and analyze people's learning and other behaviors. In the Division, students acquire knowledge and skills to become researchers with perspectives and methodology that span these disciplines.



Lecture List

Lectures and seminars by the staff of the Division include the following

Psychology of Learning and Instruction I (Sachiko KIYOKAWA)	Relationships and Children's Socio-Emotional Development (Toshihiko ENDO)
Evolutionary and Cultural Psychology of Human Emotions (Toshihiko ENDO)	Language and Cognitive Development II (Etsuko HARYU)
Language and Cognitive Development I (Etsuko HARYU)	Quantitative Research Methods (Satoshi USAMI)
Seminar on Psychological Statistics (Kensuke OKADA)	Recent Developments in Psychometrics (Satoshi USAMI)
Advanced Psychological Statistics (Kensuke OKADA)	Synthesizing Psychology Research from the Conference Lecture's View (Yuri UESAKA)
Critical Reading of Psychology Research from the Peer Reviewer's View (Yuri UESAKA)	Dissertation Research in Educational Psychology (all faculty members of the Division)
Psychology of Learning and Instruction II (Sachiko KIYOKAWA)	

Staff



Toshihiko ENDO
Professor
(Developmental Psychology)



Etsuko HARYU
Professor
(Developmental Psychology)



Kensuke OKADA
Associate Professor
(Educational Information Sciences)



Sachiko KIYOKAWA
Associate Professor
(Psychology of Learning and Instruction)



Satoshi USAMI
Associate Professor
(Educational Information Sciences)



Yuri UESAKA
Associate Professor
(Educational Cognitive Science)

Themes of Master's Theses

List of Recent Thesis Topics

- Effects of Prompting Engagement with a Part of a Task on Procrastination Behavior
- A Diagnostic Classification Model for Matching Format Tests
- Development of Semantic Networks of Children in a Second-language Environment
- Childcare Workers' Perceptions of Children's Agency: Examination from the Perspective of Psychology
- How Embodied Imagination Contributes to the Perception of Social Issues

Themes of Ph.D. Dissertations

List of Recent Thesis Topics

- Instructing Deep Notetaking to Enhance Student's Learning: Exploration, Demonstration, and Application of Effective Notetaking From the Perspective of Cognitive Psychology
- Beyond the Nuclear Family: Matrilineal Mosuo's Allomothering System and Child Social-Emotional Development
- Qualitative Examination of Gender Dysphoria and Broad Social Dysphoria Co-occurring with Autistic Spectrum Disorder: Aiming for Research and Practices that Embrace the Perspective of Individuals Experiencing These Dysphorias
- Development of Emotional Judgement from Utterance in Early Childhood
- The Influence of Textbook Utilization in Mathematics Lessons on Learners' Learning Strategies and Academic Achievement: Focusing on the Role of Textbooks as a Tool Bridging Classroom Instruction and Self-Study at Home

Department of Integrated Educational Sciences Division of Clinical Psychology



In the Division of Clinical Psychology, students learn to view various psychological and behavioral problems in light of personal development and societal contexts. The educational research fields of developmental and clinical psychology, system theory and practice of clinical psychology, and curriculum development of clinical psychology work collaboratively to provide opportunities for students to learn practical techniques of clinical psychology and practical research methods. The Division's curriculum offers courses for students to meet the requirements to become certified public psychologists and clinical psychologists.



Read the QR code for details ▼



Lecture List

Lectures and seminars by the staff of the Division include the following

Basic Practicum in Clinical Psychology I (Takahashi/Otaki/Inayoshi)	Seminar on Assessment of Clinical Psychology I [Theory and Practice of Psychological Assessment] (Takizawa)
Basic Practicum in Clinical Psychology II (Takahashi/Nōchi)	Seminar on Assessment of Clinical Psychology II (Takizawa/Takahashi/Otaki)
Practicum in Clinical Psychology I [Advanced Practical Training in Psychology] (Takahashi/Otaki/Inayoshi/Kusaka/Takii/Hayashi/Nakashima)	Research Methods in Clinical Psychology (Nōchi/Takizawa)
Practicum in Clinical Psychology II (Takahashi/Otaki/Inayoshi)	Mental Health Management Basic [Support Theory and Applications in Social Welfare Area] (Nōchi)
Clinical Psychology I (Nōchi)	Mental Health Management Applied [Theory and Practice of Mental Health Education] (Hayashi)
Clinical Psychology II (Takahashi)	Mental Health Management Applied [Support Theory and Applications in Educational Area] (Otaki)
Interview Methods for Clinical Psychology I [Theory and Practice of Psychological Support] (Takahashi/Kusaka/Takii/Hayashi)	Community Approach [Support Theory and Practice for Family, Group, and Community] (Otaki/Tanaka)
Interview Methods for Clinical Psychology II (Nōchi)	Psychiatry [Support Theory and Applications in Medical and Health Area] (Takizawa)

Staff



Masahiro NŌCHI
Professor
(Curriculum Development of Clinical Psychology)



Miho TAKAHASHI
Professor
(System Theory and Practice of Clinical Psychology)



Ryu TAKIZAWA
Associate Professor
(Curriculum Development of Clinical Psychology)



Reiko OTAKI
Lecturer
(Developmental and Clinical Psychology)

Themes of Master's Theses

List of Recent Thesis Topics

- Examination of a Potential Life-long Negative Impact on One's Well-being due to Childhood Adversity and Protection Experienced in and outside Family, and Resilience Formed by the Experience
- Impact of Autistic Traits on Social Functioning Through Mindfulness-Based Intervention: an App-Based Randomized Controlled Trial
- Occupational Development of Psychologists in light of Relations, with the Focus on the Process of Overcoming Difficulties in Relationships with People in the Same or Different Line(s) of Work
- Examination of Mental Health of University Students Suffering Over-adaptation in relation to Seeking Help, with the Focus on the Students' Decision to Ask Friends for Help
- Examination of Forgiveness Children Give to Their Parents as a Result of Intensive Introspection
- Brain Tumor Patients' Illness and Account of Their Lives, with the Focus on What They Find Incomprehensible and How They Are Found Incomprehensible

Themes of Ph.D. Dissertations

List of Recent Thesis Topics

- Understanding the Correlation between Mental Health and Subjective Work Performance and Developing a Support Program
- Inner Worlds of People Who Display Self-injurious Behavior: Analysis of Accounts by Young Adults Who Have Harmed Themselves
- Clinical Psychological Study of Drawings by People with Autistic Spectrum Disorder with the Focus on the Impact on Their Self-understanding and Relationships with Others
- Present Reality surrounding Bisexual Women and Psychological Support based on Their Life Stories and Honest Accounts
- Study on Cognitive Anger Control of Children with Developmental Disabilities by Their Parents: To Provide Support in Controlling Emotions Using ICT
- Study on School as a Protective Factor with the Focus on School Functions to Help Inappropriately Nurtured Children

Department of Integrated Educational Sciences Division of Physical and Health Education

健康教育・システム脳科学・学校保健・赤ちゃん・思春期・青少年・脳機能イメージング・身体性・筋骨格系・報酬系・健康情報論・保健室・高齢者・生理学・知覚・etc

生活習慣・運動制御・睡眠・学校体育・バイオメカニクス・計算論的神経科学・学習・自発運動・メンタルヘルス・自律神経系・情動・etc

The Physical and Health Education Course consists of four fields of study: “Educational Physiology,” “Developmental Brain Science,” “Health Education,” and “Physical Education Science.” Under close cooperation, experiments, investigations, and analyses are conducted on various topics related to the human body, mind, brain, and education. Graduate students engage in their research through close discussions with their supervisors and through receiving advice from other faculty members as appropriate.

Read the QR code for details ▼



Lecture List

Lectures and seminars by the staff of the Division include the following

◎ Lectures [Course] (Faculty member)

Topics in Physical Education I [Basic Study of Physical Education] (Daichi NOZAKI)	Dissertation Research in Physical Education [Dissertation Research in Physical Education] (Daichi NOZAKI)
System Analysis of Human Activity I [Basic Study of Educational Physiology] (Yoshiharu YAMAMOTO/Kenji MORITA)	Dissertation Research in Physical Education [Dissertation Research in Physical Education] (Kenji MORITA)
Developmental Brain Sciences I [Basic Study of Developmental Brain Sciences] (Gentaro TAGA)	Dissertation Research in Educational Physiology [Dissertation Research in Educational Physiology] (Yoshiharu YAMAMOTO)
Topics in Physical Education II [Special Study of Physical Education] (Daichi NOZAKI)	Dissertation Research in Educational Physiology [Dissertation Research in Educational Physiology] (Fumiharu TOGO)
System Analysis of Human Activity II [Special Study of Educational Physiology] (Yoshiharu YAMAMOTO/Kenji MORITA)	Dissertation Research in Developmental Brain Sciences [Dissertation Research in Developmental Brain Sciences] (Gentaro TAGA)
Developmental Brain Sciences II [Special Study of Developmental Brain Sciences] (Gentaro TAGA)	Dissertation Research in Health Education [Dissertation Research in Health Education] (Atsushi NISHIDA)
Promoting Adolescent Well-being by Preventive Science [Special Study of Health Education] (Atsushi NISHIDA)	

Staff



Yoshiharu YAMAMOTO
Professor
(Educational Physiology)



Gentaro TAGA
Professor
(Developmental Brain Sciences)



Daichi NOZAKI
Professor
(Physical Education)



Fumiharu TOGO
Professor
(Educational Physiology)



Kenji MORITA
Associate Professor
(Physical Education)

Themes of Master's Theses

List of Recent Thesis Topics

- Study on Personal Characteristics of White Matter Fiber Tracts Connecting the Anterior Insular Cortex and the Nucleus Accumbens Using Diffusion-weighted Magnetic Resonance Imaging
- Study on the Learning of Human Value Using Facial Images by Generative AI
- Ultrasonic Image Analysis of Tongue Movement during Utterance
- Associations Between Communication Quality with Parents and Experiences of Bullying Victimization and Perpetration in Pre-Teens
- Validity and Test-Retest Reliability of Smartphone-Based Cognitive Assessment in Older Adults

Themes of Ph.D. Dissertations

List of Recent Thesis Topics

- Motor Control and Adaptation in a Redundant Bimanual Motor Task
- The Developmental Origin of Agency
- Effect of Prediction on Learning and Decision-Making
- Effect of the Number of Confidants on Adolescent Mental Health
- Deep Multimodal Analysis for Daily Mental Health Monitoring

Department of Advanced Research in School Education Division of Professional Development of Teachers



The Division promotes pioneering and practical studies of the development of courses, curricula, and pedagogical expertise, aiming to create high quality learning environments and advance students' technical qualifications and capabilities of teachers. Students are trained to become practical researchers who will work collaboratively with teachers to carry out reforms of school education while leading teacher training, which includes those who already hold teaching jobs, at universities and other institutions of higher education, and who will serve as instructive teachers in preschool, primary and secondary education.

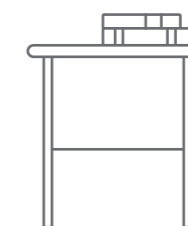
Read the QR code for details ▼



Lecture List

Lectures and seminars by the staff of the Division include the following

Thoughts and Theories of Educational Practice (Sachiko ASAI)	Mentoring Seminar of Research on Curriculum (Yasuhiko FUJIE)
Theory and Method of Learning Design (Tomonori ICHIYANAGI)	Mentoring Seminar of Research on Curriculum (Sachiko ASAI)
Research on School Education and Discourse Analysis (Yasuhiko FUJIE)	Studies on Early Childhood Education (Sachiko NOZAWA)
Case Studies of Curriculum (Sachiko ASAI)	Learning Sciences and Educational Technology (Hiroyuki MASUKAWA)
Case Studies of Classroom Lessons (Tomonori ICHIYANAGI)	Creating a Place for Imagination and Creativity: Arts Education and Society (Miki TSUKADA)
Fieldwork on Classroom Lessons (Yasuhiko FUJIE)	Introduction to School Reform Research: Perspective of Action Research (Yuta SUZUKI)
Mentoring Seminar of Research on Classroom Lessons (Tomonori ICHIYANAGI)	



Staff



Yasuhiko FUJIE
Professor
(Research on Teaching and Curriculum)



Sachiko ASAI
Professor
(Research on Teaching and Curriculum)



Tomonori ICHIYANAGI
Associate Professor
(Research on Classroom Lessons)

Themes of Master's Theses

List of Recent Thesis Topics

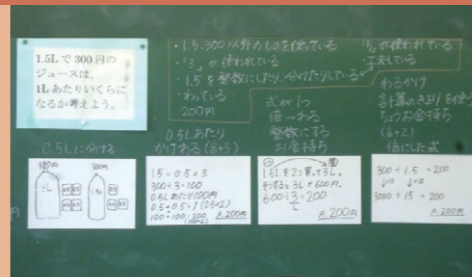
- Accounts and Practice by Middle School Teachers in Sweden concerning Students' Voices, with the Focus on Voices for Political and Social Participation and Their Relations
- Characteristics of Classes Open to Diversity with the Focus on How a Pupil Interacts with Other Children and Teachers in Class
- Strategies for Designing Learning Environments by Junior High School Students in Co-learning Settings, with the Focus on the Function on Incomplete Speech Using “Like”
- Examination of the Relation between the Approach to Childcare Quality Assurance by the Early Childhood Education and Care (ECEC) Policy and the Approach to Guaranteeing Children's Rights in Australia, with the Focus on the Process for Estab (EYLF)
- How Students Form Their Assessment of Historical Facts: Case Study of a Course Unit about the Freedom and People's Rights Movement in Social Studies for 9th Graders

Themes of Ph.D. Dissertations

List of Recent Thesis Topics

- Study of Meaning Given in High School History Courses: Examination based on the “Mediated Action” Defined by James V. Wertsch
- Historical Study of Needlework Education Reforms from the Taisho to Early Showa Periods
- Re-examination of Integrated Education Centered around School in light of the Mixed Quality of “Margins,” with the Focus on Inclusion and Expanded Education through Collaborative Activities by Schools and Local Communities

Department of Advanced Research in School Education Division of Curriculum Development



The Division promotes theoretical and development studies of curricula that are meant to advance school education. Students are trained to become researchers who conduct practical and basic research on subject pedagogy, or instructive teachers for any stages of school education. Based on theories and methodologies from sociology, psychology, literature, linguistics, and comparative studies, students work on empirical research on how to develop and provide lessons and curricula in each subject and learning opportunities across different subjects in domestic and international fields.

Read the QR code for details ▼



Lecture List

Lectures and seminars by the staff of the Division include the following

Development of Mathematical and Scientific Thinking and Classroom Learning (Nobuyuki FUJIMURA)	Dissertation Research in Humanities and Social Sciences Education (Yuto KITAMURA)
Education in the Era of Globalization: Asian Contexts (Yuto KITAMURA)	Research of Dissertation (Nobuyuki FUJIMURA)
Language Education and Teaching Materials (Kazuko TAKAHASHI)	Dissertation Research in Foreign Language Education (Yoshifumi SAITO)
English Language Teaching Methodologies (Yoshifumi SAITO)	Dissertation Research in Art Education (Hiroshi NISHIJIMA)
The Hidden Curriculum of Art Education (Hiroshi NISHIJIMA)	Theory and Practice of Japanese Language Education (Hideyuki HAMADA)
Case Studies of Language Education (Kazuko TAKAHASHI)	Global Issues and ESD (Yoshiyuki NAGATA)
Case Studies on Learning in Subject Areas (Yuto KITAMURA)	Research Methods in Education (Satoshi ARAKI)
Fieldwork on Learning in Subject Areas (Nobuyuki FUJIMURA)	Global Education Policy (Wesley TETER)
Dissertation Research in Language Education (Kazuko TAKAHASHI)	Comparative Study of Educational Systems (Yuki OHARA)

Staff



Kazuko TAKAHASHI
Professor
(Language Education)



Nobuyuki FUJIMURA
Professor
(Mathematics and Science Education)



Yuto KITAMURA
Professor
(Humanities and Social Sciences Education)



Themes of Master's Theses

List of Recent Thesis Topics

- A Study of Whole-Person Foreign Language Education with Special Attention to New English Language Teaching Methods in China
- Psychological Study of Junior High School Japanese Classes Designed to Enhance Students' Creative Thinking
- Impact of Katakana Words on How High School Students Build Their English Vocabularies
- The Role of Education in Shaping Coping Mechanisms of Elite Dalits Against Caste-Based Discrimination in Nepal
- Impact of Practicing the International Baccalaureate Education on Foreign Language Teachers, with the Focus on Inner Conflicts Experienced by the Teachers
- Psychological Examination of Mathematical Problem Solving Processes Based on the Analysis Taught in Junior and Senior High Schools

Themes of Ph.D. Dissertations

List of Recent Thesis Topics

- Relations of Preschool and Primary School Education to the Involvement of Parents in the Education in Mongolia
- Political Dynamics in Japan's Policy on English Language Education: Empirical Study of Pluralistic Policy Processes in the National and Local Governments
- Study on Contexts That Shape the Directions of Mathematical Problem Solving by Children/Students, with the Focus on the Contexts of Views on Learning, Approaches to Comparing and Examining Diverse Opinions, and Subjects
- Study on the School Experience of Children in the Gray Zone Who Have Switched to Education for Students with Intellectual Disabilities, with the Focus on Interactions with Teachers
- Act of Reading a Story with Others: Analysis of Classroom Conversation Specifically to Create a Focus

Department of Advanced Research in School Education Division of School Improvement and Policy Studies



In the Division of School Improvement and Policy Studies, students engage in theoretical and empirical studies of educational policies, educational administration and finance systems, and school administration, which promote the advancement of school education. The Division provides courses in which students acquire skills and knowledge needed to become researchers, instructive practitioners, or administrative officials (e.g., educational administration officials, school administrators, teacher consultants) capable of performing the following in this field: education policy planning and reforms, management, evaluation, among others.

Read the QR code for details ▼



Lecture List

Lectures and seminars by the staff of the Division include the following

Foundation of Education Policy (Yusuke MURAKAMI/Akihiro HASHINO)	Dissertation Research in School Management (Masaaki KATSUNO)
Issues in Contemporary School Reforms (Masaaki KATSUNO/Sam BAMKIN)	Dissertation Research in Educational Administration (Yusuke MURAKAMI)
Research Design and Methods of Education Policy Studies I (Akihiro HASHINO)	Dissertation Research in Education Policy (Akihiro HASHINO)
Case Study in Educational Administration I (Yusuke MURAKAMI)	Dissertation Research in Comparative Education Policy (Sam BAMKIN)
Fieldwork in Educational Administration (Yusuke MURAKAMI)	Developmental Study of School Management I (Koichi NAKATA)
Fieldwork in Education Policy (Akihiro HASHINO)	Issues in Children's Rights (Hiroharu SAITO)
Fieldwork in School Management (Masaaki KATSUNO)	Polymaking Process on Gender and Family (Yuki TSUJI)

Staff



Masaaki KATSUNO
Professor
(School Leadership and Management)



Yusuke MURAKAMI
Professor
(Education Politics and Policy)



Akihiro HASHINO
Associate Professor
(Education Policy and Finance)



Themes of Master's Theses

List of Recent Thesis Topics

- Study on Senior High School Education in the Age of Population Decline: From the Perspective of School Consolidation and Nation wide Student Recruitment
- How Faculty Members of Graduate Schools of Teacher Education Perceive Their Role as Educators for Teachers, with the Focus on the Relation with Collaboration between Teachers
- Study of Differences in Perception Teachers Have of Collaboration with After-school Childcare Programs, and the Causes of the Differences
- Autonomy and Organizational Philosophy of the Ministry of Education, Culture, Sports, Science and Technology in the Policymaking: Analysis of the Process for Japanese-style School Education in the Reiwa Period
- Study on the Process of Selecting a School/Career for Students with Intellectual/Developmental Disabilities in Junior High School Special Education Classes
- Study of Regulatory Factors in the Integration of Kindergartens and Nursery Schools in Municipalities

Themes of Ph.D. Dissertations

List of Recent Thesis Topics

- Study of the Policy Process and Consequences for the Reforms of Operating Subsidies Granted to National Universities in Japan
- Study of the Professionalization of School Business Leaders in the United Kingdom in Reference to Japan's School Administrative Staff System
- Process for the Enactment of the Special Act for Education Personnel and Japan Teachers' Union Movement
- Study of Government Involvement in Securing the Minimum Compulsory Education: Aspects and Visions of Homeschooling in the United States
- Enactment of Moral Education in Japan: Between State Policy and School Practice

Facilities

University Organizations/Facilities

The University of Tokyo's Graduate School of Education and Faculty of Education have a variety of organizations, including schools and other places for learning, and advanced research facilities, and work collaboratively with them in educational research and other related areas.

Secondary School Attached to the Faculty of Education

Read the QR code for details ▶



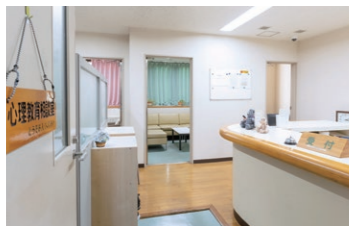
School for integrated secondary education to nurture a full sense of citizenship through inquiry-based collaborative learning

The school serves as the University's base for the advancement of teacher training and educational studies. It accepts graduate and undergraduate students for their teaching practice, class observation, and field studies.



Center for Psychological Services

Read the QR code for details ▶



Place of practical learning for graduate students who aspire to become psychologists or researchers in clinical psychology in practice

Graduate students who receive specialist education and training in clinical psychology under the guidance of supervisors provide psychological therapy and support for adults and children with psychological problems.



Center for Barrier-Free Education

Read the QR code for details ▶



A hub for educational research to break down barriers and build an inclusive society

We conduct educational research that identifies and makes visible the barriers embedded in society, with the aim of creating inclusive schools, organizations, and communities where diversity is embraced.



Professor Ryoji Hoshika
<Sociology and Disability Studies>

Center for Advanced School Education an Evidence-Based Research (CASEER)

Read the QR code for details ▶



Center for promoting evidence-based research that makes full use of educational data, and global advancement of education in collaboration with international institutions

Established in 2017, CASEER currently consists of the Division of Evidence-Based Research, which studies the effects of inquiry-based learning, and the Division of Advanced Education, which works collaboratively with international institutions.



Associate Professor Chiaki Ishiguro
<Educational Cognitive Science>

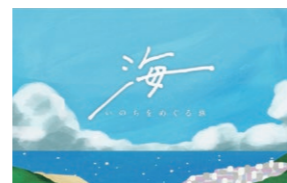
Center for Ocean Literacy and Education

Read the QR code for details ▶



The ocean will teach. People will learn. We connect both to the future.

The Center studies education around the theme of "ocean and water" in collaboration with researchers and educators in and outside Japan who look to explore how the global environment and human cultures are connected.



Center for Early Childhood Development, Education, and Policy Research (CEDEP)

Read the QR code for details ▶



Place of research for co-creation to study practices and policies for developing, nurturing, and educating children and to publish findings

CEDEP works on a number of joint/co-creative research projects in collaboration with domestic and international researchers, practitioners, national/local governments, etc., involved in practices and policies for care and education of infants and preschoolers.



Center for International Exchange

Read the QR code for details ▶



Promoting international exchange and providing support for international students to facilitate the globalization of the education and research in the Graduate School

The Center assists students and faculty members with their international exchange activities and offers international students and researchers various forms of support to facilitate their academic and research activities.



Graduate School of Education / Faculty of Education Library

Read the QR code for details ▶



Special library that collects and provides a wide range of materials about education and other related areas

The library has materials mainly on education as well as philosophy, psychology, sociology, physical and health education, and library information science. It boasts many users from inside and outside the university.



Institute for Creating Educational Research

Read the QR code for details ▶



Incubator to facilitate the birth and growth of new educational studies

The institute is an umbrella organization of the research centers for the Graduate School of Education. It supports the creation of innovative studies and practices that meet the needs of the times, transcending boundaries between disciplines.



Faculty of Education Safer Space (KYOSS)

Read the QR code for details ▶



A space and community open to all, founded on the principle of shared ease and inclusivity.

A student-run community, KYOSS organizes a variety of events. The KYOSS Lounge, a space where everyone can spend time feeling safe, is housed on the second floor of the Akamon General Research Building.

